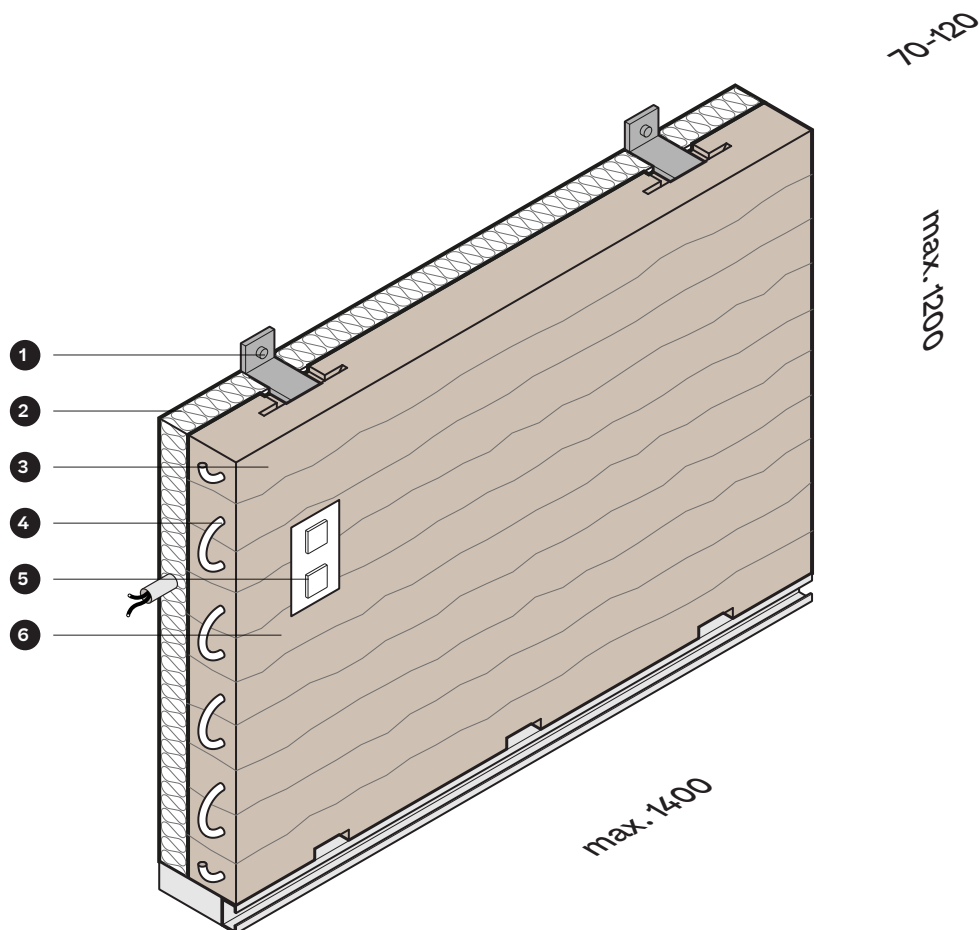


Interior Lining from 100% Earth

**LEHM
TON
ERDE**

Building with a resource that lies beneath our feet. Walls made of 100% earth combined with experience, know-how, and technology – an old ancient material reinvented. ERDEN prefabrication offers easy construction in the most sustainable way. Custom rammed earth elements, made to the highest quality, are produced off-site and installed in the home with a seamless finish.





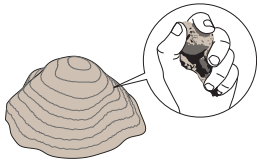
Choose your Interior Lining

Lining panels are produced and customised to order, with two finished surfaces, as load-bearing components, with integrated insulation, and heating or cooling.

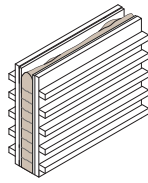
1	Substructure & base plate	A base plate is required to distribute the load of the wall a substructure behind the earth panels to anchor them. These structural elements don't already exist, they can be installed with the earth lining.
2	Insulation	In space behind the earth panels, additional insulation can be introduced between the substructure. Sheep wool offers good heat insulation and acoustic protection between spaces.
3	Finish	Lining panels are polished and finished with a Casein emulsion. The natural water-soluble solution gives the earth a smooth protective layer that prevents dusting while maintaining all the climatic benefits of earth.
4	Integrated heating	Hydronic radiant heating can be integrated into wall panels and perfectly complements the performance of rammed earth. Earth stores heat from the tubing and releases it gently for a comfortable indoor climate.
5	Services	Mechanical and electrical services can seamlessly integrated into earth panels easily. Electrical conduit or lighting cavities can be designed for and embedded during the planning stage.
6	Form	Lining panels need not always be flat minimal walls. Faceted and angular walls can be designed to create unique spaces and features.

Process

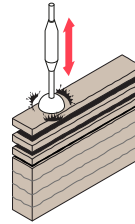
(A) 100% earth



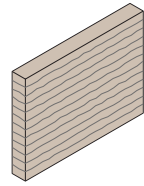
(B) Filling the formwork



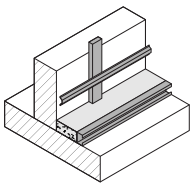
(C) Compacting earth



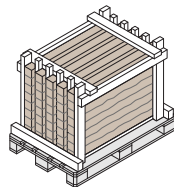
(D) Lining element



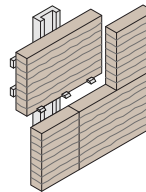
(E) Base plate and substructure



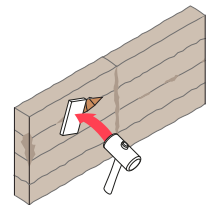
(F) Transport



(G) Installation



(H) Seamless finishing



What Interior Lining can do

Earth has many good properties. If you know how to take advantage of them, living surrounded by earth is almost unbeatable.

Acoustic absorption	Rammed earth has very good acoustic properties. It provides excellent sound insulation between rooms and reduces reverberation indoors.
Passive climate regulator	Indoor temperature and humidity can both be passively controlled with rammed earth. Its high thermal mass means the hottest and coldest parts of the day are avoided. And because earth can store moisture, indoor spaces maintain a comfortable 55% humidity.
Natural haptics	The feel of rammed earth is something everyone is drawn too. It has a deep texture that is natural and ancient, giving spaces a sense of calm.
Seamless finish	Because our rammed earth contains no concrete, it is able to be repaired and joints hidden with the same material, to the same quality, and with a seamless finish.
Absorbs odour	Earth is porous allowing moisture and air to pass through its skin. It can breathe. That means airborne odour particles can be filtered out of an indoor space.
Recyclable	The panels are made from 100% earth, no cement is added. That means when it comes time to say goodbye, there is no waste, no hazards. Earth returns to earth.

Price from 450 Euro/m2

* The costs depend on the quantity, size, complexity, and location of the wall area. In order to provide a more accurate quote, we need detailed information about the project.

What we need to know for an accurate cost calculation

- Location of the current project
- Access to the installation site
- Wall accessibility within the building
- Load-bearing capacity of the subsurface or floor structure
- Surface area of the walls
- Choice of corner construction details
- Amount of services and installations
- Floor to wall construction detail
- On-site assistance

Advantages

- 100% natural
- 100% recyclable
- No disposal fees
- Best indoor climate
- Moisture regulating
- CO2 neutral
- Thermal mass
- Heat reservoir
- Protection against overheating
- Sound absorbing
- Fire retardant
- Lightfastness as the material does not fade or darken

“The envelope that surrounds us should be able to breathe and diffuse in the same way as our bodies.”

Martin Rauch



LEHM TON ERDE

Lehm Ton Erde Baukunst GmbH
Quadernstraße 7
6824 Schlins
Österreich

www.lehmtonerde.at
info@lehmtonerde.at

📷 erden.at
🏢 ERDEN