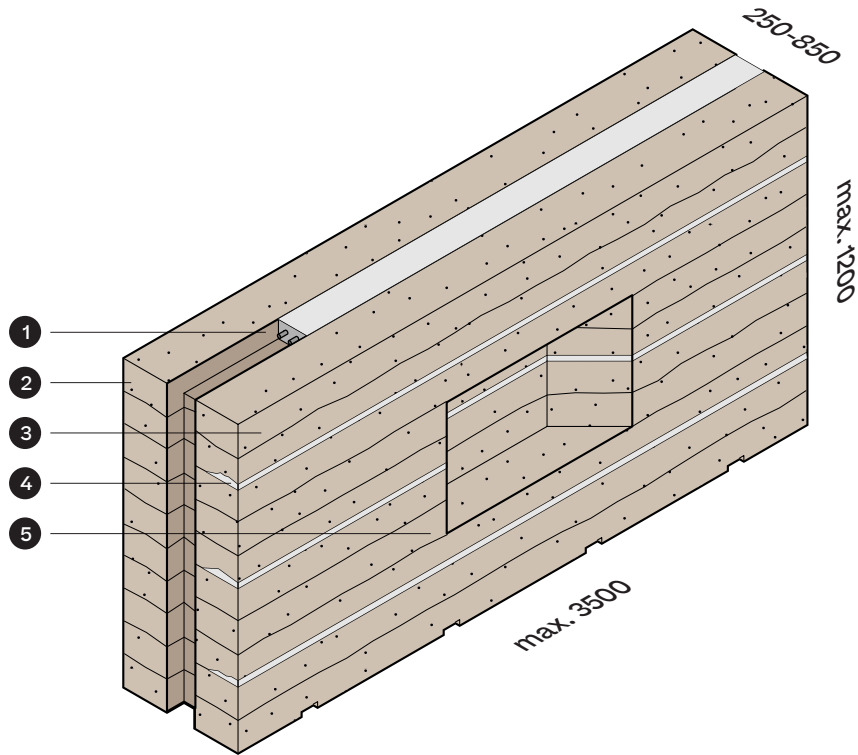


Rammed Earth Walls from 100% earth

**LEHM
TON
ERDE**

Building with a resource that lies beneath our feet. Walls made of 100% earth, combined with experience, know-how, and technology — an ancient material, reinvented. Lehm Ton Erde prefabrication offers easy construction in the most sustainable way. Custom rammed earth elements, made to the highest quality, are produced in our factory and installed on-site with a seamless finish.



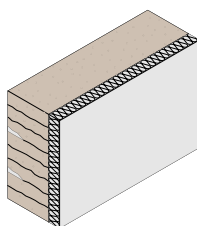


Your wall, your choice

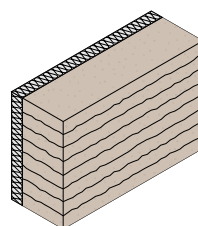
Rammed Earth Walls are produced and customized to order, with two finished surfaces. They serve as load-bearing components and can include integrated insulation as well as heating or cooling systems.

1	Stability	Wall elements are designed to fit together like giant LEGO bricks. Tongue-and-groove detailing ensures rigid stability across the entire wall.
2	Load-bearing	Rammed earth can bear huge loads. The strength of the material means it can be used as a structural element as well as façade cladding.
3	Surface	The walls have a textured surface, which can be made finer or coarser depending on their use. They can be coloured with natural clay or sand, and interior surfaces may be coated with a natural casein emulsion to prevent dusting.
4	Erosion checks	The natural erosion that occurs—especially on the prevailing weather side—is taken into account during design and construction. Integrating erosion checks control this process, which over time emphasizes the natural character of the material.
5	Form	Rammed earth elements aren't limited to flat, minimal walls. Angular edges, niches, and other inlays can be integrated into designs to create unique spaces and features.

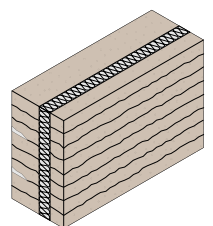
Rammed Earth Walls can be combined with typical insulation using conventional building methods. Integrated core insulation is also available as a custom-made solution.



(A) Internal

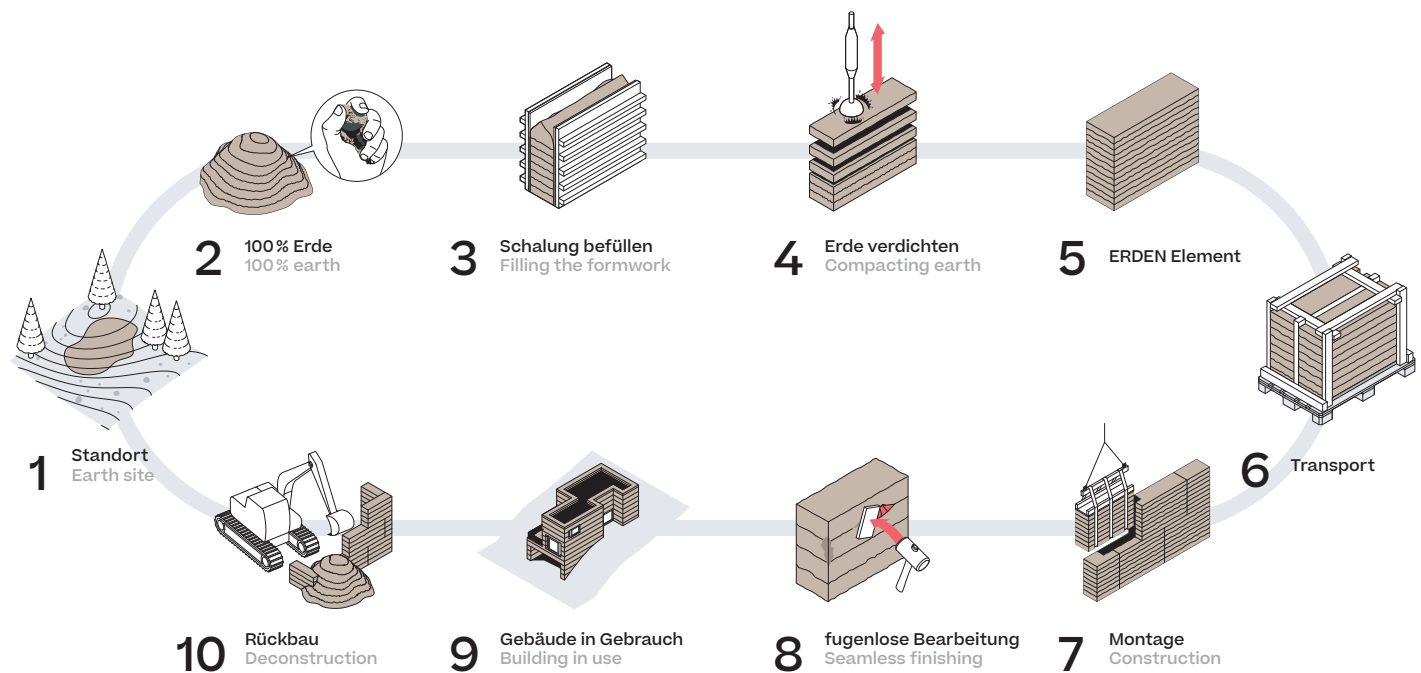


(B) External



(C) Core

Process



Built to Perform

Earth has many valuable properties. When you know how to harness them, living surrounded by earth is almost unbeatable.

Passive climate regulator	Indoor temperature and humidity are passively controlled with rammed earth. Its high thermal mass helps buffer the hottest and coldest parts of the day. And because earth can store moisture, indoor spaces maintain a comfortable humidity level of around 55%—ideal for both comfort and respiratory health.
Acoustic transmission	Rammed earth has outstanding acoustic properties. It provides excellent sound insulation between spaces and significantly reduces indoor reverberation.
Transport	Traditionally, all rammed earth constructions had to be built in situ. Our walls are free from this limitation—they can be prefabricated to specification and transported to site, reducing both construction time and cost.
Natural haptics	The feel of rammed earth is something everyone is drawn to. Its deep, natural texture carries an ancient quality, giving spaces a sense of calm and grounding.
Seamless finish	Because our rammed earth mixture contains no cement, rammed earth walls can be easily retouched with the same material. This means that imperfections and joints can be patched repeatedly to the same high quality, creating a seamless surface finish throughout the wall's lifetime.
Circular by nature	The elements are made from 100% earth, with no cement added. This allows the material to remain water-soluble and entirely free of toxins. Walls can be crushed and remade using the same material. And when the time comes to say goodbye, there is no waste, no hazards—earth returns to earth.

What we need to know for an accurate cost calculation

- Location of the current project
- Access to the installation site
- Wall accessibility within the building
- Type of foundations
- Surface area of the walls
- Choice of corner construction details
- Amount of services and installations
- Floor-to-wall construction details
- On-site assistance

Advantages

- 100% natural
- 100% recyclable
- No disposal fees
- Best indoor climate
- Moisture-regulating
- CO2 neutral
- High thermal mass
- Heat reservoir
- Noise reduction
- Fire retardant
- Lightfastness — the material does not fade or darken

“The envelope that surrounds us should be able to breathe and diffuse in the same way as our bodies.”

Martin Rauch

**LEHM
TON
ERDE**

Lehm Ton Erde Baukunst GmbH
Quadernstraße 7
6824 Schlins
Österreich

www.lehmtonerde.at
info@lehmtonerde.at

📷 [erden.at](https://www.instagram.com/erden.at)
📱 **ERDEN**

